

# Nylon Hammer-Fixing NHF



## Description

The Nylon Hammer Fixing is one of the fastest and inexpensive methods of fixing for static loads that requires very little screwdriver work. The nylon sleeve is manufactured from durable polyamide 6 which gives longer fixing life. This fixing can be used in concrete, solid bricks, lightweight concrete blocks, hollow block, rock and stonework.

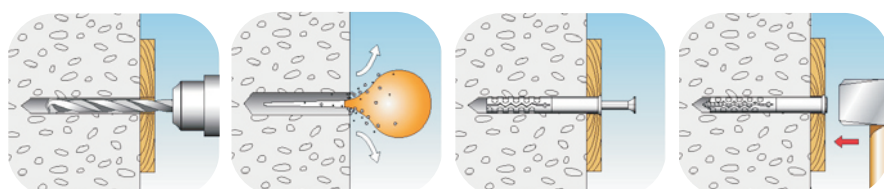
### Applications

- Conduit, drywall track
- Battens, brackets
- Skirting boards, signs
- Brick ties, frame cramps
- Switch boxes, trunking

### Features & Benefits

- Pre-assembled
- Zinc plated
- Stainless steel for full corrosion protection
- Nylon sleeve gives long life
- Countersunk head allows flush finish
- One operation through fixing
- Quick installation

## Installation Guide



## Nylon Hammer Fixing Cylindrical Head NHF-C



Product Code	Anchor Length (mm)	Hole Depth (mm)	Fastening Thickness (mm)	Screw Head Dia. (mm)	Screw Thread Dia. (mm)	Box Quantity
NHF05025C	25	35	0	8	3.5	100
NHF05030C	30	35	5	8	3.5	100
NHF05040C	40	35	15	8	3.5	100
NHF05050C	50	35	25	8	3.5	100
NHF06035C	35	40	5	9	4	100
NHF06040C	40	40	10	9	4	100
NHF06050C	50	40	20	9	4	100
NHF06060C	60	40	30	9	4	100
NHF06070C	70	40	40	9	4	100
NHF06080C	80	40	50	9	4	100
NHF08060C	60	50	20	11	5	50
NHF08080C	80	50	40	11	5	50
NHF08100C	100	50	60	11	5	50
NHF80120C	120	50	80	11	5	50
NHF08140C	140	50	100	11	5	50

## Nylon Hammer Fixing Flat Head NHF-F



Product Code	Anchor Length (mm)	Hole Depth (mm)	Fastening Thickness (mm)	Screw Head Dia. (mm)	Screw Thread Dia. (mm)	Box Quantity
NHF05025F	25	35	0	8	3.5	100
NHF05030F	30	35	5	8	3.5	100
NHF05040F	40	35	15	8	3.5	100
NHF05050F	50	35	25	8	3.5	100
NHF06035F	35	40	5	9	4	100
NHF06040F	40	40	10	9	4	100
NHF06050F	50	40	20	9	4	100
NHF06060F	60	40	30	9	4	100
NHF06070F	70	40	40	9	4	100
NHF06080F	80	40	50	9	4	100
NHF08060F	60	50	20	11	5	50
NHF08080F	80	50	40	11	5	50
NHF08100F	100	50	60	11	5	50
NHF80120F	120	50	80	11	5	50
NHF08140F	140	50	100	11	5	50

# Nylon Frame Anchor NFA



## Description

The Nylon Frame Anchors are designed for fixing all types of frames to concrete and other hard base material. The nylon sleeve provides a high bend resistance and strong pullout loads. The retention lugs locate the outer section of hollow frames and give a strong friction grip in timber. Frame position maybe adjusted during installation and the Window Frame Anchors maybe adjusted or removed at any time.

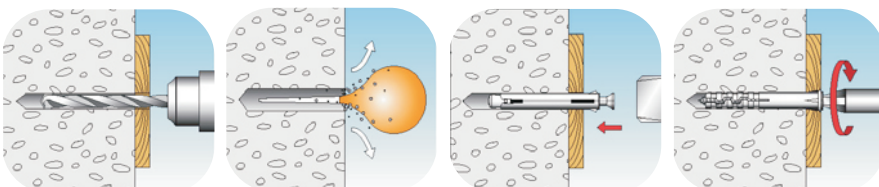
### Applications

- Door & Window Frames
- Wall Plates
- Battens
- Sole Plates
- Dense Concrete
- Solid Brick
- Perforated Bricks
- Aircrete
- Natural Stone

### Features & Benefits

- Nylon Sleeve – High bend resistance
- Wood pitch screw – Strong pullout loads
- Anti-rotation fns
- Corrosion protectione

## Installation Guide



## Nylon Frame Anchor Standard Expansion NFA-SC



Product Code	Anchor Length (mm)	Hole Depth (mm)	Fastening Thickness (mm)	Screw Head Dia. (mm)	Screw Thread Dia. (mm)	Box Quantity
NFA80060SC	60	55	10	10	5	100
NFA80080SC	80	55	30	10	5	100
NFA80100SC	100	55	50	10	5	100
NFA80120SC	120	55	70	10	5	100
NFA80140SC	140	55	90	10	5	100
NFA10080SC	80	55	30	12	6	100
NFA10100SC	100	55	50	12	6	100
NFA10120SC	120	55	70	12	6	100
NFA10140SC	140	55	90	12	6	100
NFA10160SC	160	55	110	12	6	100

## Nylon Frame Anchor Standard Expansion NFA-SH



Product Code	Anchor Length (mm)	Hole Depth (mm)	Fastening Thickness (mm)	Screw Head Dia. (mm)	Screw Thread Dia. (mm)	Box Quantity
NFA80060SH	60	55	10	10	5	100
NFA80080SH	80	55	30	10	5	100
NFA80100SH	100	55	50	10	5	100
NFA80120SH	120	55	70	10	5	100
NFA80140SH	140	55	90	10	5	100
NFA10080SH	80	55	30	12	6	100
NFA10100SH	100	55	50	12	6	100
NFA10120SH	120	55	70	12	6	100
NFA10140SH	140	55	90	12	6	100
NFA10160SH	160	55	110	12	6	100

## Nylon Frame Anchor Long Expansion NFA-LC



Product Code	Anchor Length (mm)	Hole Depth (mm)	Fastening Thickness (mm)	Screw Head Dia. (mm)	Screw Thread Dia. (mm)	Box Quantity
NFA10080LC	80	75	15	12	6	100
NFA10100LC	100	75	30	12	6	100
NFA10120LC	120	75	50	12	6	100
NFA10140LC	140	75	70	12	6	100
NFA10160LC	160	75	90	12	6	100

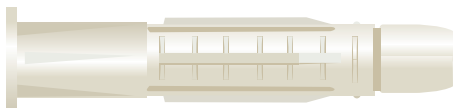
## Nylon Frame Anchor Long Expansion NFA-LH



Product Code	Anchor Length (mm)	Hole Depth (mm)	Fastening Thickness (mm)	Screw Head Dia. (mm)	Screw Thread Dia. (mm)	Box Quantity
NFA10080LH	80	75	15	12	6	100
NFA10100LH	100	75	30	12	6	100
NFA10120LH	120	75	50	12	6	100
NFA10140LH	140	75	70	12	6	100
NFA10160LH	160	75	90	12	6	100



# Universal Plug UPT



## Description

The Universal Plug UPT was developed for all-purpose fixing. Friction- locking in solid materials and form locking in hollow materials by means of the “knotting effect”. For optimum performance is guaranteed by form-locking in hollow materials such as plasterboard and friction-locking in solid material like brick or block.

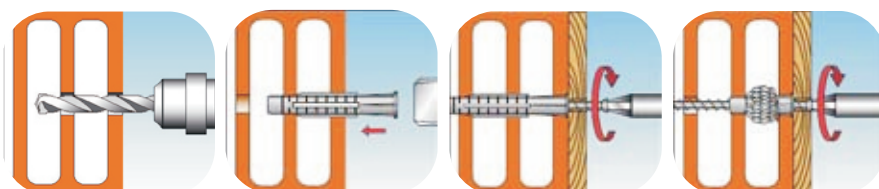
### Applications

- Wall Shelves
- Light Wall Cupboards
- Curtain Rails
- Skirting Boards
- Electrical Switches
- Cable Ducts
- Lamps
- Cable Slips
- Towel Holders
- Mirrors
- Mirror Cabinets
- Soap Dishes

### Features & Benefits

- Performs in hollow (plasterboard) & solid materials (brick or block)
- Once the screw fits the plug it then ensures a perfect compatibility with the substrate
- The UPT is produced with a collar that prevents the fixing from being pushed too far into the drill hole

## Installation Guide



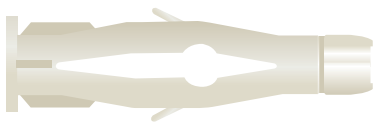
## Universal Plug UPT



Product Code	Anchoring Length (mm)	Hole Depth (mm)	Thread Diameter (mm)	Box Quantity
UPT06039	39	50	4.0 - 5.0	400
UPT08051	51	60	5.0 - 6.0	200
UPT10061	61	70	7.0 - 8.0	100



# Universal Plug UPF



## Description

The Universal Plug UPF was developed for all possible cases. It holds its position in solid building material through friction grip and in perforated bricks or hollow walls through form locking grip. It combines the two functioning methods: expansion and collapsing. The fixing thus stays firm in every case, and in virtually every material.

### Applications

- Wall Shelves
- Light Wall Cupboard
- Curtain Rails
- Skirting Boards
- Electrical Switches
- Cable Ducts
- Lamps
- Cable Slips
- Towel Holders
- Mirrors
- Mirror Cabinets
- Soap Dishes

### Features & Benefits

- Installs in concrete, solid bricks, perforated bricks, hollow blocks, aircrete, gypsum, plasterboards and board building materials from 6mm thickness

## Installation Guide



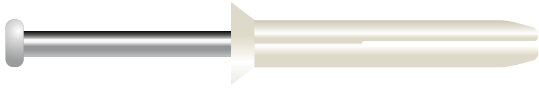
## Universal Plug UPF



Product Code	Anchor Length (mm)	Hole Depth (mm)	Thread Thickness (mm)	Box Quantity
UPF06035	35	45	3.0 - 3.5	400
UPF08050	50	60	4.0 - 5.0	200
UPF10060	60	70	5.0 - 6.0	100



# Nylon Nail-In Anchors NNA



## Description

The nylon nail in anchor is a time saving hammer in nylon plug with pre assembled 304 stainless steel nail-screw for corrosive environments. The hammer fixing expands when the nail is driven in, and holds by friction in the drill hole. Suitable for most types of base materials.

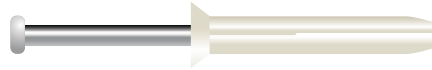
### Applications

- Electrical Installations
- Roof installations
- Interior finishing
- Fastening wood

### Features & Benefits

- Simple removal using a screwdriver equipped with a crossrecess bit
- Reduced hole and setting depths
- Trouble free setting in all conditions
- Stiff anchor body

## Nylon Nail-In Anchors NNA-F



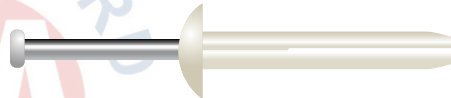
Product Code	Hole Diameter (mm)	Head Diameter (mm)	Box Quantity
NNA05025F	5	8	100
NNA05038F	5	8	100
NNA65025F	6.5	11	100
NNA65038F	6.5	11	100
NNA65050F	6.5	11	100
NNA65075F	6.5	11	50

## Nylon Nail-In Anchors NNA-R



Product Code	Hole Diameter (mm)	Head Diameter (mm)	Box Quantity
NNA05025R	5	8	100
NNA05038R	5	8	100
NNA65025R	6.5	11	100
NNA65038R	6.5	11	100
NNA65050R	6.5	11	100
NNA65075R	6.5	11	50

## Nylon Nail-In Anchors NNA-M



Product Code	Hole Diameter (mm)	Head Diameter (mm)	Box Quantity
NNA05020M	5	11	100
NNA05025M	5	11	100
NNA05038M	5	11	100
NNA65020M	6.5	14	100
NNA65025M	6.5	14	100
NNA65038M	6.5	14	100
NNA65050M	6.5	14	100
NNA65075M	6.5	14	50
NNA65100M	6.5	14	50



# Steel Express Nail SEN



## Description

The Steel Express Nail is an expander nail designed for lightweight support and through fixing in concrete, brick or natural stone. The Steel Express Nail is suitable, where there are fire safety requirements with regard to the mounting, where a small setting depth is required and where traditional mounting would take too long.

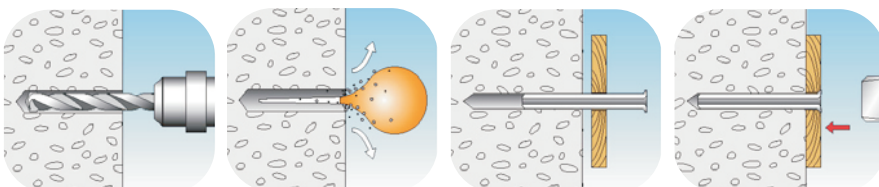
### Applications

- Conduit, drywall track
- Battens, brackets
- Skirting boards, signs
- Brick ties, frame cramps
- Switch boxes, trunking

### Features & Benefits

- When hammered in the express nail expands its entire length in the hole
- Coated surface enables quick and easy installation
- No screw or plug required

## Installation Guide



## Steel Express Nail SEN



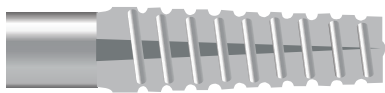
Product Code	Length (mm)	Hole Diameter (mm)	Hole Depth (mm)	Box Quantity
SEN06030	30	6	40	100
SEN06040	40	6	40	100
SEN06050	50	6	40	100
SEN06060	60	6	40	100
SEN06080	80	6	40	100
SEN08050	50	8	50	50
SEN08070	70	8	50	50
SEN08090	90	8	50	50
SEN80110	110	8	50	50
SEN08130	130	8	50	50
SEN08150	150	8	50	50
SEN08180	180	8	50	50

Cat.  
**C**

Category C Lightweight Anchors



# Sleeve Light Block Anchor SLB



## Description

The Sleeve Light Block Anchor is an all-round metal anchor for use in virtually any building material. The anchor is expanded by the screw and holds by generating contact pressure against the inside of the drill hole.

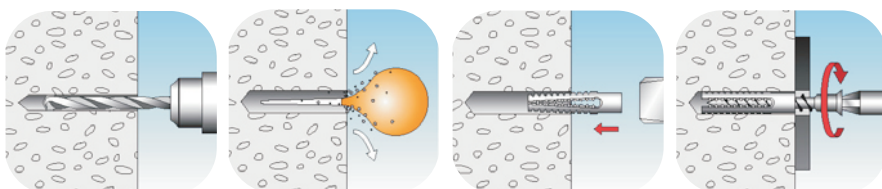
### Applications

- Gas Pipes
- Water Pipes
- Pipe Clips
- Dense Concrete
- Solid Brick
- Perforated Bricks
- Aircrete
- Natural Stone

### Features & Benefits

- The metal claws prevent the anchor from turning inside the drill hole in any building material
- Easy impact installation without pre-drilling to quick and efficient setting into light gas beton
- Suitable for wood and chipboard screws

## Installation Guide



## Sleeve Light Block Anchor SLB



Cat.  
**C**

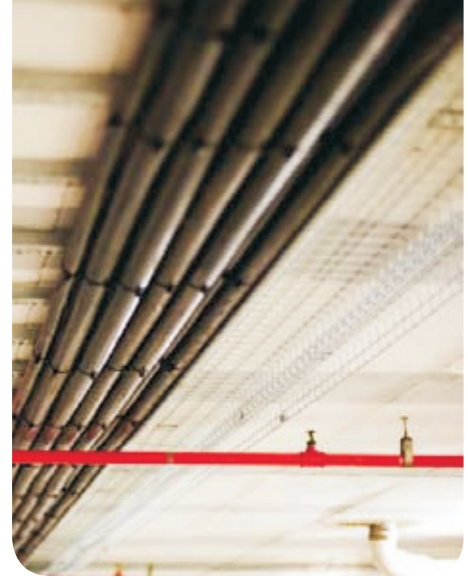
Box Quantity	Length (mm)	Hole Diameter (mm)
SLB05030	30	6
SLB06032	32	8
SLB08038	38	10
SLB08060	60	10
SLB10060	60	12



Category **C** Lightweight Anchors



# Split Drive Anchors SDA



## Description

The Steel Drive anchor is a one piece, pre-expanded anchor available in carbon steel for use in concrete and stone. As the anchor is driven into the base material, the two sheared halves of the expansion mechanism are compressed to match the diameter of the drilled hole. Once sealed at the required embedment, the sheared halves of the expansion mechanism exert continuous compression force against the wall of the hole for superior capacities.

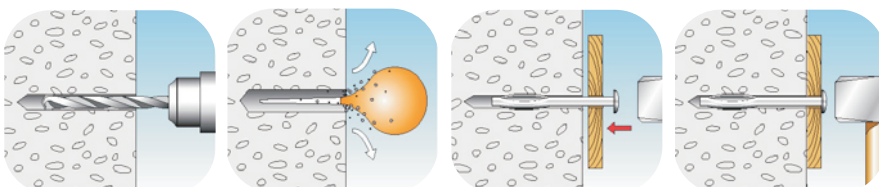
### Applications

- Electrical boxes and conduits
- Securing foundations
  - Anchoring wood to concrete
  - Ceiling applications
- Duct straps
- Exterior handrails
- Waterproofing materials to foundation walls
- Fixing wall ties
- All security fixtures

### Features & Benefits

- One piece anchor
- Fast and easy installation
- Cost effective fixing
- Permanent security

## Installation Guide



## Split Drive Anchors SDA



Product Code	Anchor Length (mm)	Hole Diameter (mm)	Hole Depth (mm)	Fastening Thickness (mm)	Box Quantity
SDA05025	25	5.0	22	3	100
SDA05038	38	5.0	32	6	100
SDA05050	50	5.0	32	18	100
SDA05062	62	5.0	32	30	100
SDA65032	32	6.5	25	7	100
SDA65038	38	6.5	32	6	100
SDA65050	50	6.5	32	18	100
SDA65064	64	6.5	32	32	100
SDA65075	75	6.5	32	43	100
SDA65087	87	6.5	32	55	100
SDA65100	100	6.5	32	68	100

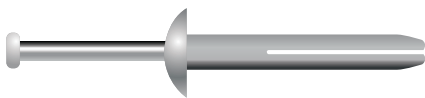
## Ceiling Express Hanger CEH



Product Code	Hole Diameter (mm)	Hole Depth (mm)	Box Quantity
CEH08042	5.2	30	100



# Zinc Alloy Hammer-In Anchor ZHA



## Description

The Zinc Alloy Hammer-In Anchor is a nail expanding anchor suitable for materials such as concrete, solid brickwork and solid stonework. It is a vandal proof anchor ideal for signs and notices with a large diameter head that gives greater pull over strength. It has a zinc alloy body for corrosion protection.

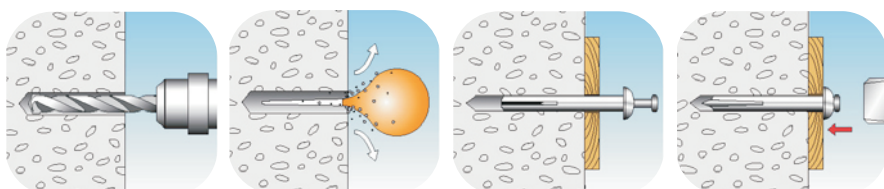
### Applications

- Switch boxes
- Brick ties and wall ties
- Billboards
- Trunking
- Conduits and straps
- Dense concrete
- Solid Brick fixing allows for quick installation
- Perforated Bricks
- Aircrete
- Natural Stone

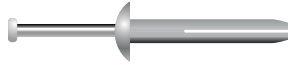
### Features & Benefits

- Pre-assembled fixing allows for quick installation
- Permanent vandal proof fixture for security applications
- Through fixing
- Zinc alloy body for corrosion protection

## Installation Guide



## Hammer-In Anchor Zinc Alloy ZHA



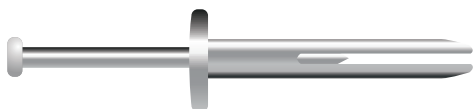
Cat.  
**C**

Product Code	Length (mm)	Hole Diameter (mm)	Box Quantity
ZHA06020	20	6	100
ZHA06025	25	6	100
ZHA06030	30	6	100
ZHA06040	40	6	100
ZHA06050	50	6	100
ZHA06060	60	6	100

Category **C** Lightweight Anchors



# Steel Hammer-In Anchor SHA



## Description

The Steel Hammer In Anchor is a nail expanding anchor suitable for materials such as concrete, solid brickwork and solid stonework. Its vandal proof anchor ideal for fixing signs and notices. This all steel version gives it a high fire resistance. It performs better than the nylon hammerscrew in the fixing of plasterboard ceiling panels to a concrete soffit where a better load and fire resistance is beneficial.

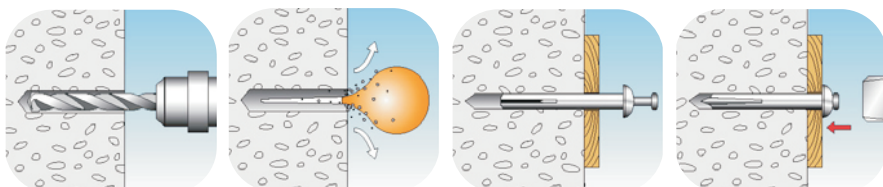
### Applications

- Switch boxes
  - Billboards
  - Trunking
- Conduits and straps

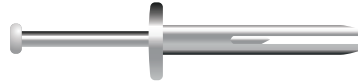
### Features & Benefits

- Pre-assembled fixing allows for quick installation
- Permanent vandal proof fixture for security applications
- Through fixing
- All metal anchor allowing higher fire resistance

## Installation Guide



## Hammer-In Anchor Steel SHA



Product Code	Length (mm)	Hole Diameter (mm)	Box Quantity
SHA06030	30	6	100
SHA06040	40	6	100
SHA06050	50	6	100

Cat.  
**C**

Category **C** Lightweight Anchors



# Ceiling Hangers CH



## Description

The Ceiling Hangers are specifically designed for the light duty suspension of services from concrete ceilings using wire or strap hangers. Although traditionally used for vertical suspension, ceiling hangers may be used at angles up to 30° from the vertical suspension using adjustable wire cable systems.

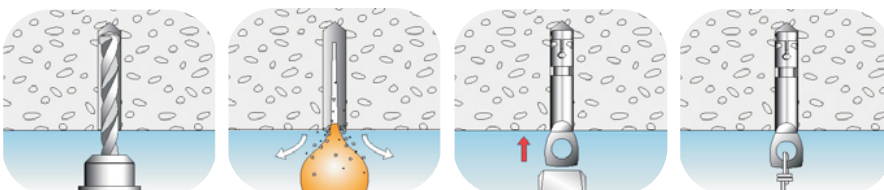
### Applications

- Dense concrete
- Solid Brick
- Perforated Bricks
- Aircrete
- Natural Stone

### Features & Benefits

- Quick and easy installation
- Ideal for wire suspension systems

## Installation Guide



## Tie Wire Hanger TWH



Product Code	Length (mm)	Hole Depth (mm)	Box Quantity
TWH06055	55	40	100

## Rod Hanger RH



Product Code	Anchohor Length (mm)	Hole Depth (mm)	Thread Diameter (mm)	Box Quantity
RH06055	55	40	6	100
RH06055	55	40	8	100
RH06055	55	40	10	100



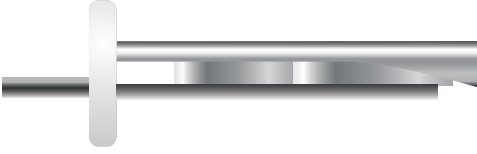
Cat.  
C

Category C Lightweight Anchors





# Safety Metal Hammer Drive SMH



## Description

The Wedge-shaped segments of the hammer drive move over each other during the installation, causing the nail to wedge into the hole. Ceiling fixing for rapid installation with high retaining power. Through fixing installation – suitable for concrete, stone and brick.

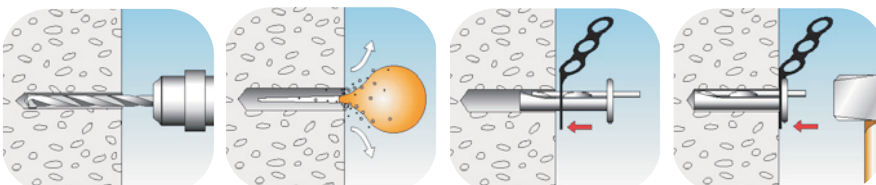
### Applications

- Ceiling fixing for rapid installation, with high retaining power
- Through fixing installation suitable for concrete and brick
- The wedge shaped segments of the DBZ hammer drive move over each other during the installation, causing
- Dense Concrete
- Solid Brick
- Perforated Bricks
- Aircrete
- Natural Stone

### Features & Benefits

- Quick and easy installation
- Immediate and automatic expansion
- Higher fire resistance (compared to nylon hammer fixing)

## Installation Guide



## Safety Metal Hammer Drive SMH



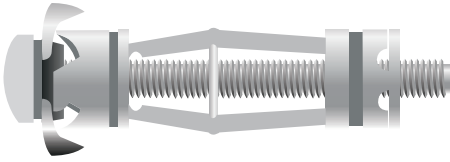
Product Code	Hole Diameter (mm)	Hole Depth (mm)	Box Quantity
SMH06040	6	40	100
SMH06070	6	40	100

Cat.  
**C**

Category **C** Lightweight Anchors



# Hollow Wall Anchor HWA



## Description

Hollow wall anchors provide a strong, performance anchorage to a wide range of materials. The anti-rotation barbs dig into the partition board to allow screwdriver setting. For fast, repetitive installations a setting tool is available. The specially shaped legs collapse during the setting in a controlled manner to form a wide base for maximum strength. Fixtures can be removed and replaced without losing the anchor.

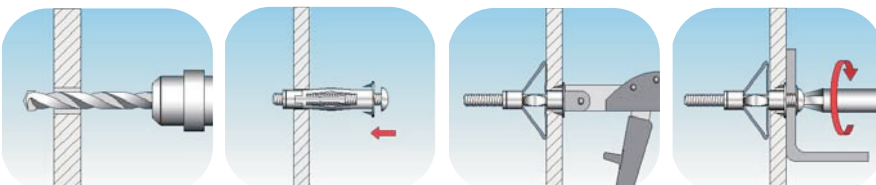
### Applications

- Switch boxes
- Conduit saddles
- Consumer units & appliances
- Radiator brackets
- Partition brackets
- Cupboards & Shelves
- Hardboard, plasterboard and other partition materials.

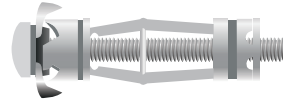
### Features & Benefits

- Zinc and yellow passivated
- Combination head screw
- Anti rotation lugs
- Large fange prevents “pull” into base
- Fast installation with setting tool
- The screw can be removed and re-ftted
- Flush fnish head

## Installation Guide



## Hollow Wall Anchor HWA



Cat.  
**C**

Category **C** Lightweight Anchors

Product Code	Length (mm)	Grip Range (mm)	Hole Diameter (mm)	Box Quantity
HWA04025	25	0 - 5	9	100
HWA04038	38	3 - 11	9	100
HWA04050	50	3 - 11	9	100
HWA04045	45	8 - 16	9	100
HWA04052	52	3 - 20	9	100
HWA04052	52	16 - 23	9	100
HWA04065	65	31 - 38	11	100
HWA05045	45	6 - 13	11	100
HWA05058	58	3 - 16	11	100
HWA05071	71	16 - 32	11	100
HWA05088	88	32 - 45	11	100
HWA05045	45	6 - 13	13	100
HWA06058	58	3 - 16	13	100
HWA06071	71	16 - 32	13	100
HWA06088	88	32 - 45	13	100





## Description

The Rubber Nut is a versatile fixing for problem base materials, cavity fixings and dynamic loads. It can be used for fixing into perforated bricks, hollow concrete block, plastic, sheet metal, plywood and is especially effective in brittle materials. It fits tightly into irregular holes forming a watertight seal.

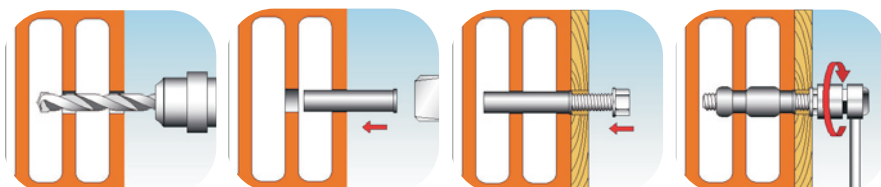
### Applications

- Windshield Wiper Motors & Windshield Washer Reservoirs
- Radiator Mountings, Heating Fan Motors & Electric Panels
- Garage Door Openers & Inner Door Panels

### Features & Benefits

- Suitable where access is limited
- Expands into irregular holes & provides watertight seal
- Resists hot oils up to 110°C & brass nut resists corrosion

## Installation Guide



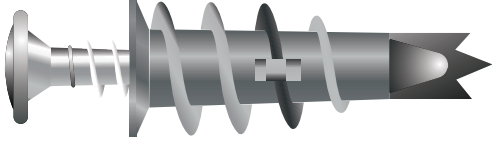
**Rubber Nut RN**

Product Code	Hole Diameter (mm)	Thread Diameter (mm)	Min Wall Thickness (mm)	Max Wall Thickness (mm)	Box Quantity
RN03024	8	3	6	14	50
RN04010	8	4	0	2	50
RN04024	8	4	6	14	50
RN05015	10	5	0	2	50
RN05025	10	5	6	14	50
RN05040	10	5	19	26	50
RN06015	13	6	0	2	50
RN06025	13	6	3	13	50
RN06035	13	6	13	23	50
RN08025	18	8	6	15	50
RN08050	18	8	25	35	25
RN10055	20	10	25	35	25
RN12075	24	12	33	45	25





# Plasterboard Anchor PA



## Description

The Plasterboard Anchor is a fast and cost effective fixing for lightweight items into plasterboard. It can be used in single or double thickness plasterboard. Rapid and easy installation can be achieved by use of a power pozi drive screwdriver.

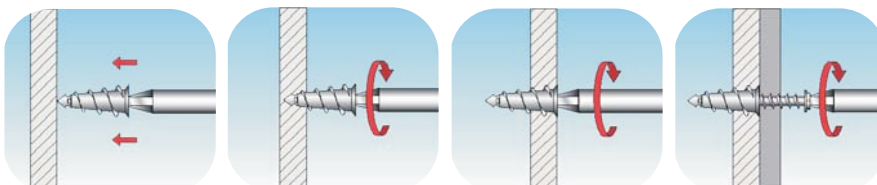
### Applications

- Electrical Boxes
- Sanitary Ware
- Cable Trunking
- Shelving

### Features & Benefits

- Self-drilling
- Flange prevents push through
- Supplied C/W Screw
- Fast and Easy Installation
- No Min/Max Plasterboard Thickness
- Cost Effective Fixing.

## Installation Guide

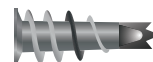


**Plasterboard Anchor PBA-N4**

Product Code	Thread Diameter (mm)	Screw Length (mm)	Fastening Thickness (mm)	Anchor Length (mm)	Box Quantity
PBAN4	4	25	15	29	100

**Plasterboard Anchor PBA-Z4**

Product Code	Thread Diameter (mm)	Screw Length (mm)	Fastening Thickness (mm)	Anchor Length (mm)	Box Quantity
PBAZ4	4	35	10	31	100

**Plasterboard Anchor**

Product Code	Thread Diameter (mm)	Screw Length (mm)	Fastening Thickness (mm)	Anchor Length (mm)	Box Quantity
PBAZ4	4	35	-	31	100

**Mini Plasterboard Anchor Countersunk Head MPA-CH**

Product Code	Thread Diameter (mm)	Screw Length (mm)	Fastening Thickness (mm)	Anchor Length (mm)	Box Quantity
MPACH	6	7	5	26	100

**Mini Plasterboard Anchor Large Wafer Head MPA-WH**

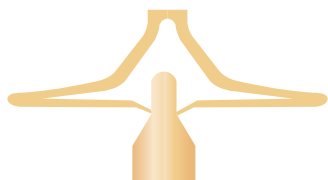
Product Code	Thread Diameter (mm)	Screw Length (mm)	Fastening Thickness (mm)	Anchor Length (mm)	Box Quantity
MPAWH	6	11	5	26	100

**Mini Nylon Plasterboard Anchor NPA**

Product Code	Thread Diameter (mm)	Screw Length (mm)	Fastening Thickness (mm)	Anchor Length (mm)	Box Quantity
NPA	6	11	5	26	100

# Nylon Toggle Anchor

## NTA-O



### Description

The Nylon Toggle Anchor is a one piece cavity fastener. It is a medium duty anchor for use in plasterboard. Fixtures can be removed and refitted to allow for redecoration and can be used with both woodscrews or self-tapping screws. Main application are ceiling fixtures, light shelving, brackets and hooks.

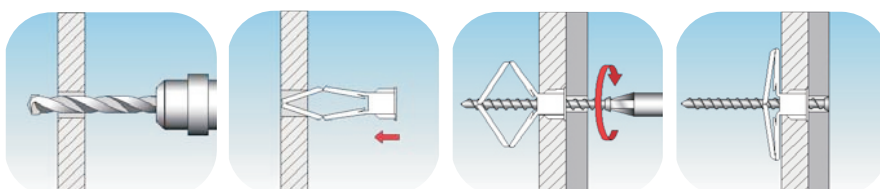
#### Applications

- Switch boxes
- Conduit saddles
- Consumer units and appliances
- Radiator brackets
- Partition brackets
- Cupboards & Shelves
- Hardboard, plasterboard and other partition materials

#### Features & Benefits

- Switch boxes
- Conduit saddles
- Consumer units and appliances
- Radiator brackets
- Partition brackets
- Cupboards & Shelves
- Hardboard, plasterboard and other partition materials

### Installation Guide



## Nylon Toggle Anchor NTA-1



Product Code	Wood Screw Size (mm)	Wood Screw Gauge (mm)	Wall Thickness Range (mm)	Min. Cavity Depth (mm)	Hole Depth (mm)	Box Quantity
NTA10 - 1	3.5 - 4.0	6 - 8	10 - 12	30	8	100
NTA12 - 1	3.5 - 4.0	6 - 8	12 - 16	35	8	100
NTA16 - 1	3.5 - 4.0	6 - 8	16 - 19	40	8	100

## Nylon Toggle Anchor NTA-2



Product Code	Wood Screw Size (mm)	Wood Screw Gauge (mm)	Wall Thickness Range (mm)	Min. Cavity Depth (mm)	Hole Depth (mm)	Box Quantity
NTA10 - 2	3.5 - 4.0	6 - 8	10 - 12	30	8	100
NTA12 - 2	3.5 - 4.0	6 - 8	12 - 16	35	8	100
NTA16 - 2	3.5 - 4.0	6 - 8	16 - 19	40	8	100

## Nylon Toggle Anchor NTA-3



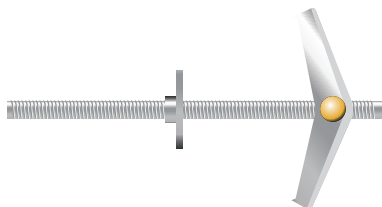
Product Code	Wood Screw Size (mm)	Wood Screw Gauge (mm)	Wall Thickness Range (mm)	Min. Cavity Depth (mm)	Hole Depth (mm)	Box Quantity
NTA10 - 3	3.5 - 4.0	6 - 8	10 - 12	30	8	100
NTA12 - 3	3.5 - 4.0	6 - 8	12 - 16	35	8	100
NTA16 - 3	3.5 - 4.0	6 - 8	16 - 19	40	8	100

## Heavy Duty Toggle Anchor HDT



Box Quantity	Length (mm)	Hole Diameter (mm)
HDT5.0 - 6.0	12	100
HDT8.0 - 12.0	20	100

# Spring Toggles Gravity Toggles STW/GT



## Description

The Spring Toggle Wing is a fire resistant hollow wall anchor which expands by spring force into any cavity. Once fully pushed through the pre-drilled hole the spring wings automatically expand in the void. Tightening the screw pulls the wings towards the inner face of the cavity creating a clamping fixing.

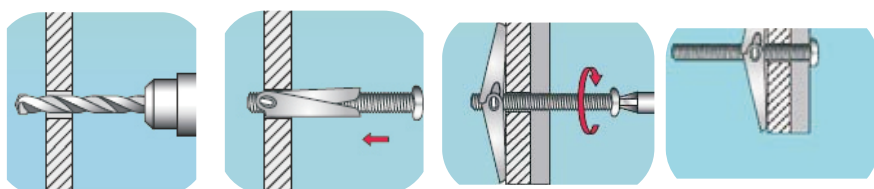
### Applications

- Fixing pictures
- Lamps
- Electric switches
- Key boxes
- Towel rails

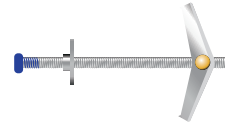
### Features & Benefits

- Specially designed for small cavity depths
- Fully zinc-plated for good corrosion protection
- Heavy gauge nut to prevent tripping under load
- Long threaded rods allow large wall thicknesses to be bridged
- Heavy gauge material for superior loads
- Machine screw for ease of tightening
- Spreads load over wide area for extra load capacity

## Installation Guide

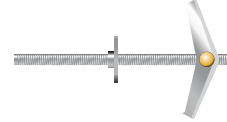


## Spring Toggle Pan Head Screw STWTS



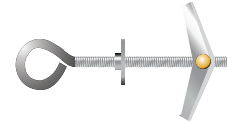
Product Code	Toggle Size	Screw Length (mm)	Hole Diameter (mm)	Max. Board Thickness (mm)	Min Cavity Depth (mm)	Box Quantity
STW3090TS	M3	90	12	75	25	100
STW4100TS	M4	100	14	80	35	100

## Spring Toggle Threaded Rod STWTP



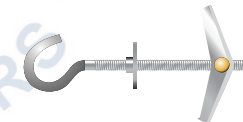
Product Code	Toggle Size	Stud Length (mm)	Hole Diameter (mm)	Max. Board Thickness (mm)	Min Cavity Depth (mm)	Box Quantity
STW3090TP	M3	90	12	75	25	100
STW4100TP	M4	100	14	80	35	100
STW5100TP	M5	100	16	80	45	100

## Spring Toggle Eye Screw STWTE



Product Code	Toggle Size	Eye Srew Length (mm)	Hole Diameter (mm)	Max. Board Thickness (mm)	Min Cavity Depth (mm)	Box Quantity
STW350TE	M3	50	12	25	25	100
STW470TE	M4	70	14	30	35	100
STW570TE	M5	70	16	50	45	100

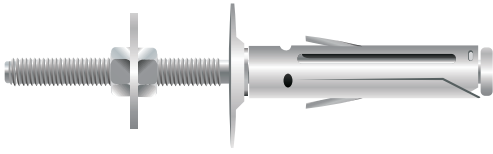
## Spring Toggle Hook Screw STWTH



Product Code	Toggle Size	Hook Screw Length (mm)	Hole Diameter (mm)	Max. Board Thickness (mm)	Min Cavity Depth (mm)	Box Quantity
STW350TH	M3	50	12	25	25	100
STW470TH	M4	70	14	30	35	100
STW570TH	M5	70	16	50	45	100



# Sanitary Cavity Anchor Metal RBSM



## Description

The Metal Sanitary Cavity Anchor is a plug that comes with fitted accessories. It is suited for all types of construction materials.

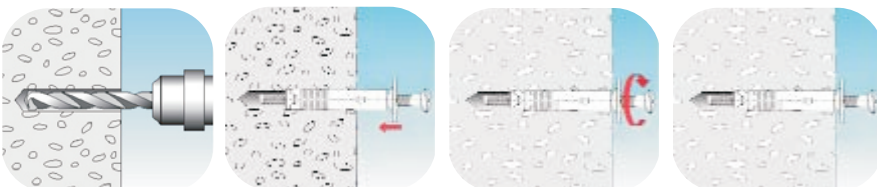
### Applications

- Suited for all supports: stone, concrete, solid bricks and hollow bricks

### Features & Benefits

- Expansion is obtained by pulling back the metal cone, when the screw or the accessory is tightened
- Lateral ribs prevent the anchor from rotating
- It is available in a wide range of accessories

## Installation Guide





## Sanitary Cavity Anchor Metal Eyebolt RBSM-1



Product Code	Hole Diameter (mm)	Material	Screw Type	Box Quantity
RBSM8-1	8	METAL	EYEBOLT	100
RBSM9-1	9	METAL	EYEBOLT	100

## Sanitary Cavity Anchor Metal WireHook RBSM-2



Product Code	Hole Diameter (mm)	Material	Screw Type	Box Quantity
RBSM8-2	8	METAL	WIRE HOOK	100
RBSM9-2	9	METAL	WIRE HOOK	100

## Sanitary Cavity Anchor Metal ShortHook RBSM-3



Product Code	Hole Diameter (mm)	Material	Screw Type	Box Quantity
RBSM8-3	8	METAL	SHORT HOOK	100
RBSM9-3	9	METAL	SHORT HOOK	100

## Sanitary Cavity Anchor Metal Medium Hook RBSM-4



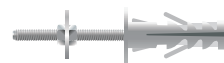
Product Code	Hole Diameter (mm)	Material	Screw Type	Box Quantity
RBSM8-4	8	METAL	MEDIUM HOOK	100
RBSM9-4	9	METAL	MEDIUM HOOK	100

## Sanitary Cavity Anchor Metal Long Hook RBSM-5



Product Code	Hole Diameter (mm)	Material	Screw Type	Box Quantity
RBSM8-5	8	METAL	LONG HOOK	100
RBSM9-5	9	METAL	LONG HOOK	100

## Sanitary Cavity Anchor Metal Threaded Rod RBSM-6



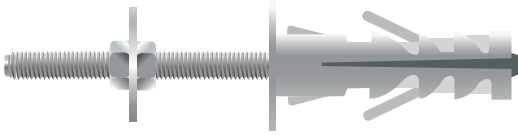
Product Code	Hole Diameter (mm)	Material	Screw Type	Box Quantity
RBSM8-6	8	METAL	THREADED ROD	100
RBSM9-6	9	METAL	THREADED ROD	100

## Sanitary Cavity Anchor Metal Screw RBSM-7



Product Code	Hole Diameter (mm)	Material	Screw Type	Box Quantity
RBSM8-7	8	METAL	SCREW	100
RBSM9-7	9	METAL	SCREW	100

# Sanitary Cavity Anchor Nylon RBSN



## Description

The Nylon Sanitary Cavity Anchor is a plug that comes with fitted accessories. It is suited for all types of construction materials.

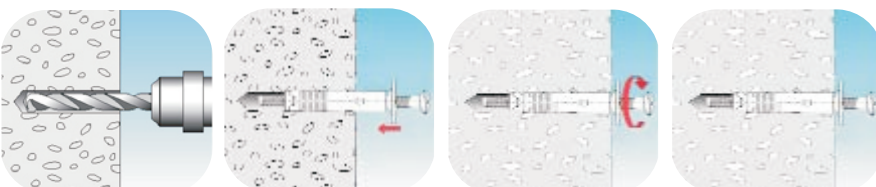
### Applications

- Suited for all supports: stone, concrete, solid bricks and hollow bricks

### Features & Benefits

- Expansion is obtained by pulling back the metal cone, when the screw or the accessory is tightened
- Lateral ribs prevent the anchor from rotating
- It is available in a wide range of accessories

## Installation Guide



## Sanitary Cavity Anchor Nylon Eyebolt RBSN-1



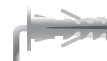
Product Code	Hole Diameter (mm)	Material	Screw Type	Box Quantity
RBSN9-1	9	NYLON	EYEBOLT	100
RBSN12-1	12	NYLON	EYEBOLT	100

## Sanitary Cavity Anchor Nylon Wire Hook RBSN-2



Product Code	Hole Diameter (mm)	Material	Screw Type	Box Quantity
RBSN9-2	9	NYLON	WIRE HOOK	100
RBSN12-2	12	NYLON	WIRE HOOK	100

## Sanitary Cavity Anchor Nylon Short Hook RBSN-3



Product Code	Hole Diameter (mm)	Material	Screw Type	Box Quantity
RBSN9-3	9	NYLON	SHORT HOOK	100
RBSN12-3	12	NYLON	SHORT HOOK	100

## Sanitary Cavity Anchor Nylon Medium Hook RBSN-4



Product Code	Hole Diameter (mm)	Material	Screw Type	Box Quantity
RBSN9-4	9	NYLON	MEDIUM HOOK	100
RBSN12-4	12	NYLON	MEDIUM HOOK	100

## Sanitary Cavity Anchor Nylon Long Hook RBSN-5



Product Code	Hole Diameter (mm)	Material	Screw Type	Box Quantity
RBSN9-5	9	NYLON	LONG HOOK	100
RBSN12-5	12	NYLON	LONG HOOK	100

## Sanitary Cavity Anchor Nylon Threaded Rod RBSN-6



Product Code	Hole Diameter (mm)	Material	Screw Type	Box Quantity
RBSN9-6	9	NYLON	THREADED ROD	100
RBSN12-6	12	NYLON	THREADED ROD	100

## Sanitary Cavity Anchor Nylon Screw RBSN-7



Product Code	Hole Diameter (mm)	Material	Screw Type	Box Quantity
RBSN9-7	9	NYLON	SCREW	100
RBSN12-7	12	NYLON	SCREW	100

# Spring Nut/Swivel Strut SNM/SSN



## Description

Fastening elements for rails. Comes with version without spring.  
Simple installation in the rail.

### Applications

- Suited for supporting rails

### Features & Benefits

- Single part, simple and time-saving in use
- For all types of channels
- For threaded rods from M6 to M12

## Spring Nut Without Spring SNNS

Product Code	Thickness of Nut (mm)	Thread Diameter (mm)	Spring Size (mm)	Inner Box Quantity
SN06061NS	6.1	M6	-	100
SN08061NS	6.1	M8	-	100
SN08080NS	8.0	M8	-	100
SN10092NS	9.2	M10	-	100
SN12092NS	9.2	M12	-	100
SN12120NS	12.0	M12	-	100

## Spring Nut With Short Spring SNSS

Product Code	Thickness of Nut (mm)	Thread Diameter (mm)	Spring Size (mm)	Inner Box Quantity
SN06061SS	6.1	M6	20	100
SN08061SS	6.1	M8	20	100
SN08080SS	8.0	M8	20	100
SN10092SS	9.2	M10	20	100
SN12092SS	9.2	M12	20	100
SN12120SS	12.0	M12	20	100

## Spring Nut With Long Spring SNLS

Product Code	Thickness of Nut (mm)	Thread Diameter (mm)	Spring Size (mm)	Inner Box Quantity
SN06061LS	6.1	M6	38	100
SN08061LS	6.1	M8	38	100
SN08080LS	8.0	M8	38	100
SN10092LS	9.2	M10	38	100
SN12092LS	9.2	M12	38	100
SN12120LS	12.0	M12	38	100

# Cable Clips RCC/FCC



## Description

Nail clip with pre-assembled hardened nail for the efficient installation of cables.

### Applications

- To secure and tidy cables routes to walls

### Features & Benefits

- Simple and quick installation
- Pre-assembled nail reduces installation time

## Round Cable Clip RCC



Product Code	Cable Clip Size	Cable Clip (mm)	Inner Box Quantity
RCC020	M2	2	100
<a href="#">RCC030</a>	<a href="#">M3</a>	<a href="#">3</a>	<a href="#">100</a>
RCC035	M3.5	3.5	100
<a href="#">RCC045</a>	<a href="#">M4.5</a>	<a href="#">4.5</a>	<a href="#">100</a>
RCC050	M5	5	100
<a href="#">RCC060</a>	<a href="#">M6</a>	<a href="#">6</a>	<a href="#">100</a>
RCC070	M7	7	100
<a href="#">RCC090</a>	<a href="#">M9</a>	<a href="#">9</a>	<a href="#">100</a>
RCC110	M11	11	100
<a href="#">RCC140</a>	<a href="#">M14</a>	<a href="#">14</a>	<a href="#">100</a>
RCC160	M16	16	100
<a href="#">RCC190</a>	<a href="#">M19</a>	<a href="#">19</a>	<a href="#">100</a>
RCC220	M22	22	100
<a href="#">RCC280</a>	<a href="#">M28</a>	<a href="#">28</a>	<a href="#">50</a>

## Flat Twin and Earth Cable Clip FCC



Product Code	Cable Clip Size	Cable Clip (mm)	Inner Box Quantity
FCC0704	M7 x 4	1	100
<a href="#">FCC0905</a>	<a href="#">M9 x 6</a>	<a href="#">1.5</a>	<a href="#">100</a>
FCC1005	M10 x 6	2.5	100
<a href="#">FCC1306</a>	<a href="#">M13 x 6</a>	<a href="#">4</a>	<a href="#">100</a>
FCC1407	M14 x 7	6	100
<a href="#">FCC1809</a>	<a href="#">M18 x 9</a>	<a href="#">10</a>	<a href="#">100</a>